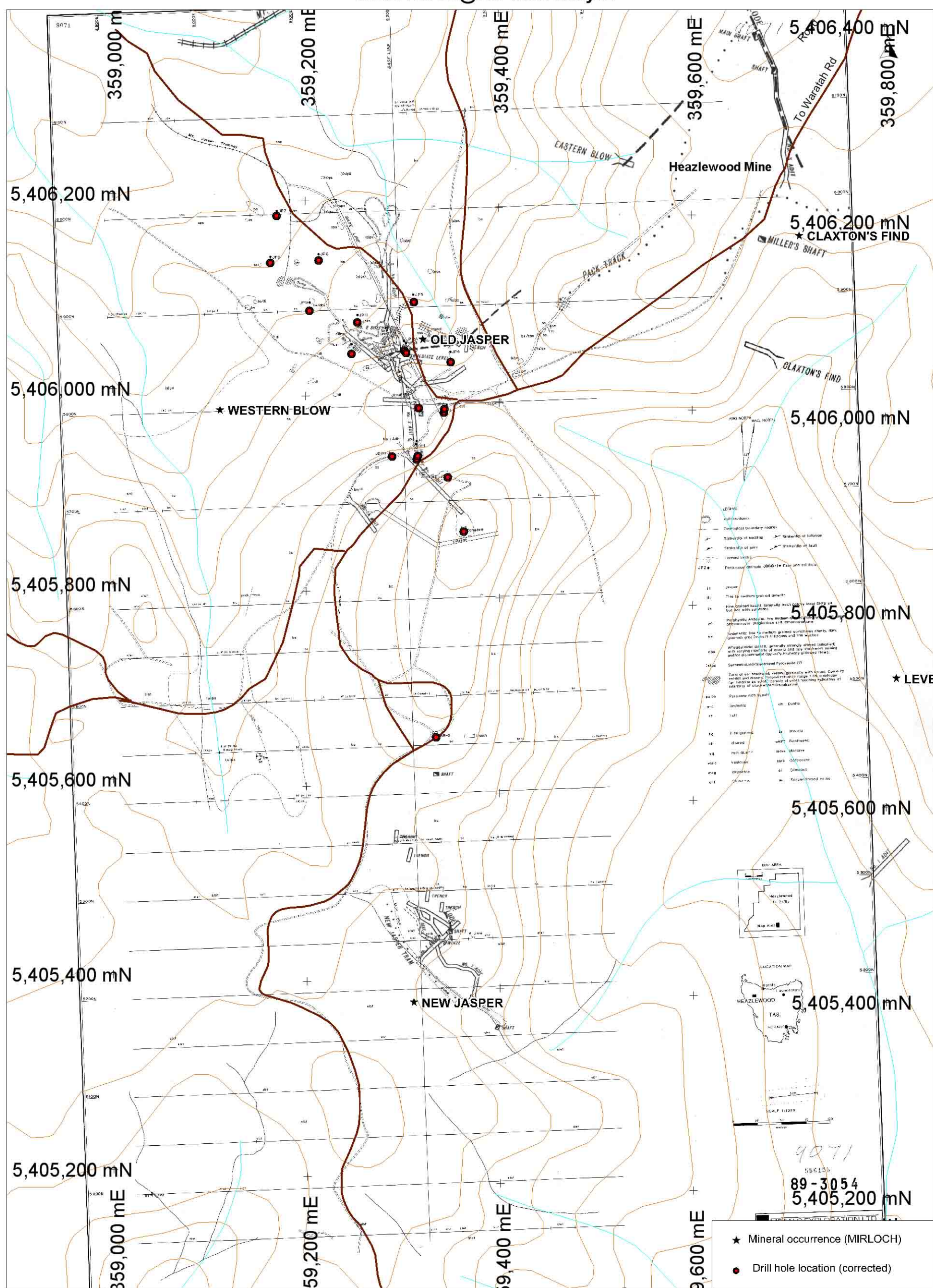


EL40/2010 Heazlewood Hill : Topography with Jasper Hill Area Geol Mapping Plan, MetalsEx 1989, & Mines Plan, Nye 1923 -
Scale 1:3700 @ A3. AMR 9May12



Notes: Topo/geol mapping plan from MetalsEx rpt 89-3054 p162, & underground workings from GSB33 Nye 1923, p202.
Mines location interpretation done on a best fit basis by AMR. Old Jasper Mine and Heazlewood Mine locations field checked,
and GPS co-ords taken.